

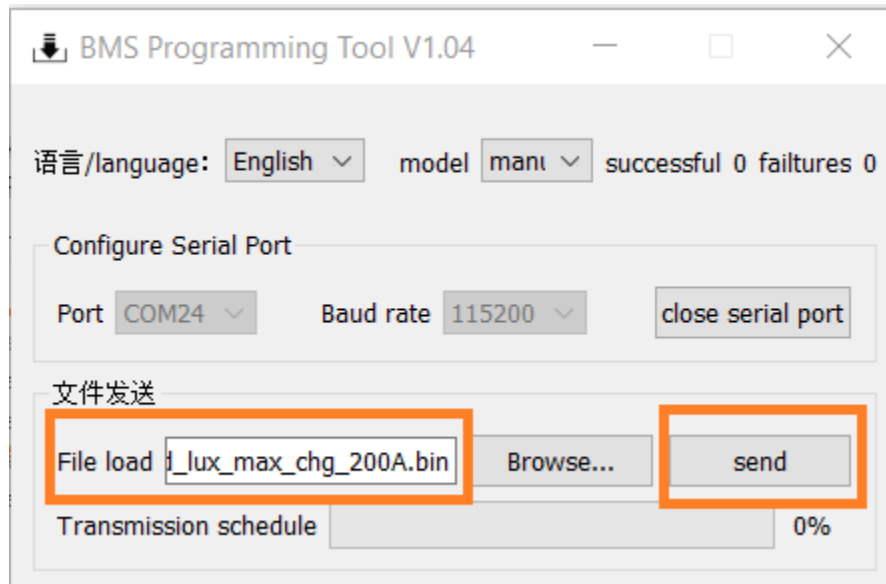
10. After clicking Browse..., file explorer will open with firmware options located in the main Powerpro folder (doubleclick to open this folder) . Now open the charging firmware folder with the proper charging current that you intend to update to, either 100amp, 140amp, or 200amp .

Name	Date modified	Type	Size
Powerpro 100amp constant current charg...	2023-08-15 11:02 AM	File folder	
Powerpro 140amp constant current charg...	2023-08-15 11:04 AM	File folder	
Powerpro 200amp constant current charg...	2023-08-15 11:04 AM	File folder	
PowerPro updater	2023-08-11 11:11 AM	File folder	
PDF Guide on updating a PowerPro WallMoun...	2023-08-11 11:21 AM	Microsoft Edge PD...	146 KB

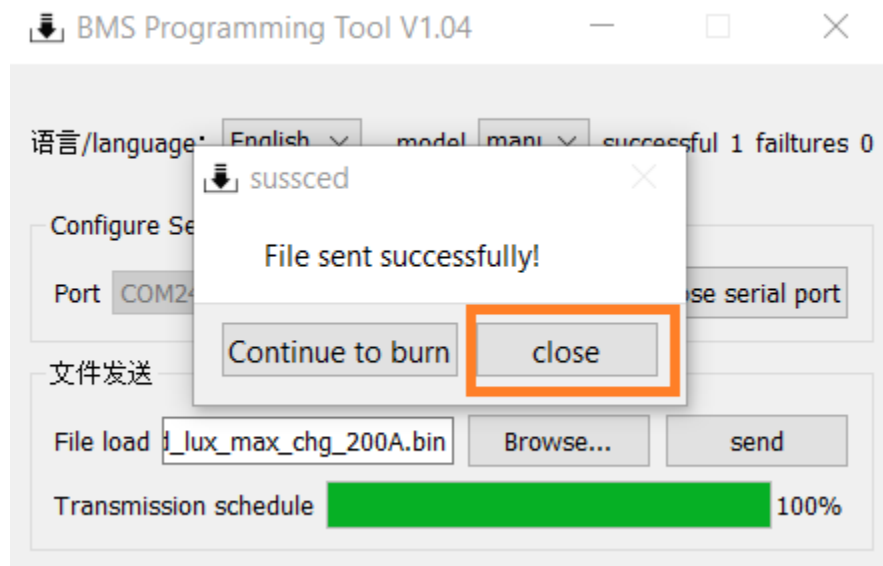
11. Now select the .bin file.

Name	Date modified	Type	Size
all_in_one_16s_6id_lux_max_chg_200A.bin	2023-08-09 7:58 AM	BIN File	55 KB

12. After the .bin file has been loaded into the updater, click send.



13. The Transmission schedule will now begin to fill to 100%, followed by a "File sent successfully!" pop-up box. Click close to proceed.



14. Now click close serial port. You have successfully updated your PowerPro battery. You can close this application by clicking the × in the upper right corner.

